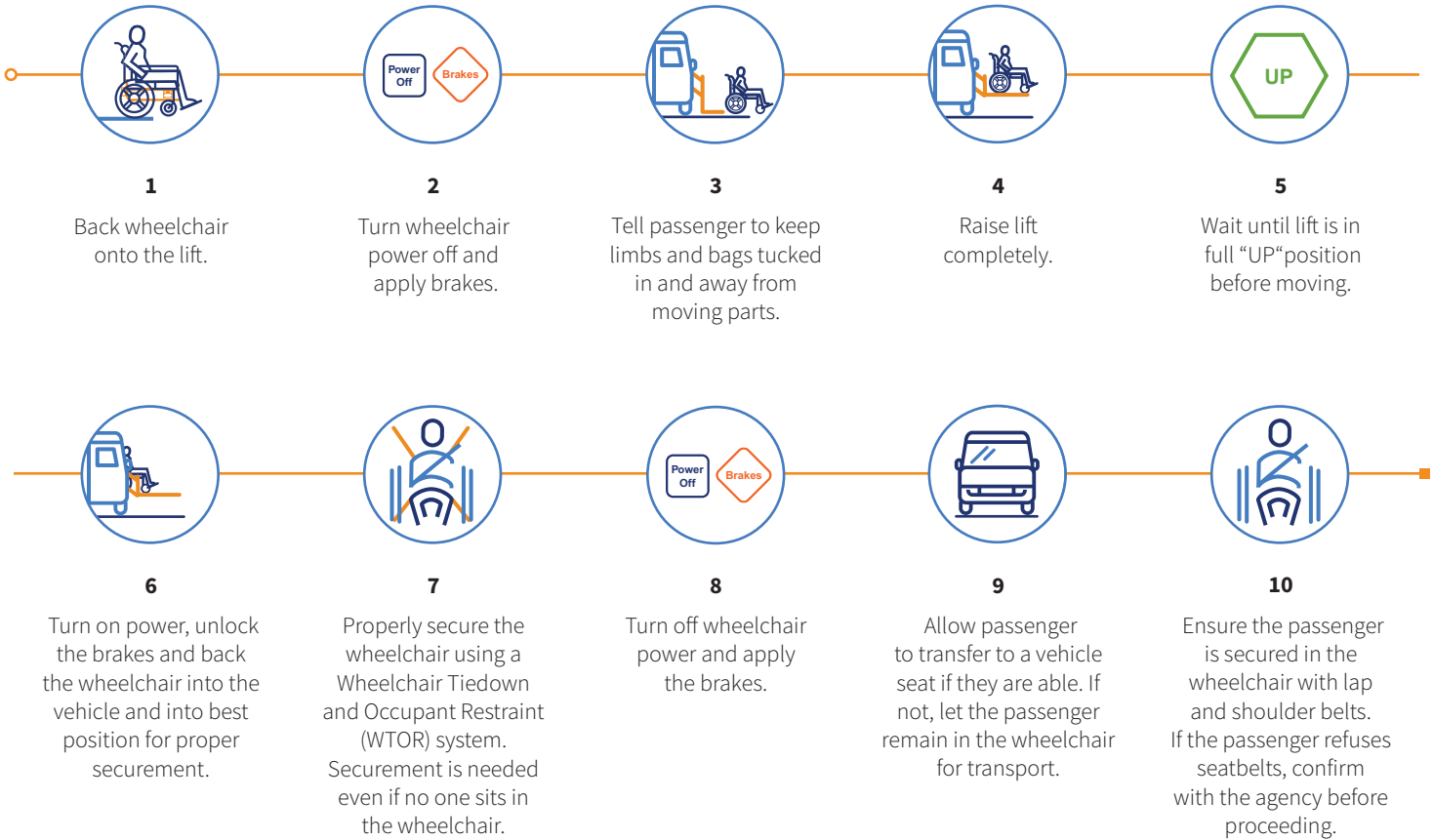


10 Steps to Properly Load A Wheelchair



NEVER LIFT THE WHEELCHAIR.



NEVER TRAVEL WITH AN UNSECURED WHEELCHAIR.



ALWAYS KEEP INSTRUCTIONS FOR LOADING WHEELCHAIRS IN THE VAN OR BUS.



ALWAYS RESPECT THE WHEELCHAIR AS THE PASSENGER'S PERSONAL PROPERTY.

AmTrust maintains this infographic as a service for its customers. This information is intended to give you a place to start when finding information about a particular safety question. This article is not intended to provide authoritative answers to safety and health questions. Before using the information here, the accuracy and appropriateness of the information to your specific situation should be verified by a person qualified to assess all the factors involved.